

Inhalt

Modul 14

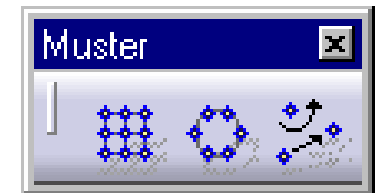
Die Funktionen dieses Kapitels ermöglichen das Verändern einzelner Komponenten oder ganzer Körper.

Transformation →

Spiegeln →

Muster →

Skalieren →



Transformation - Muster

Modul 14

Transformation

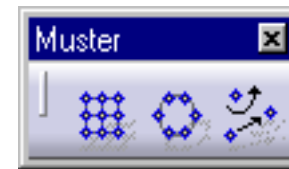


Bewegen

Rotation

Symmetrie

Muster



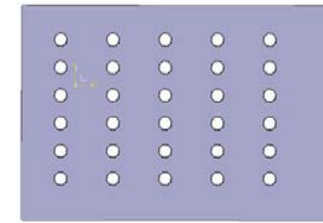
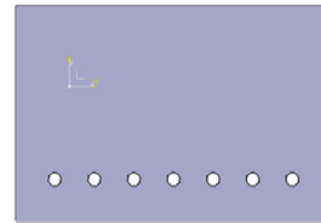
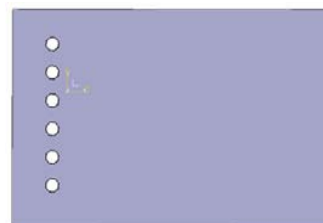
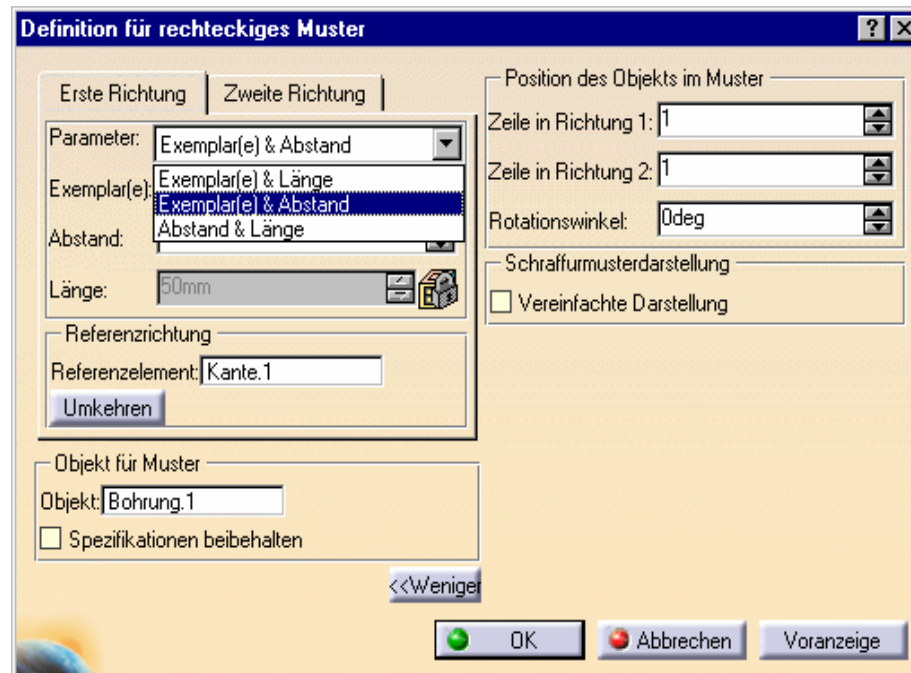
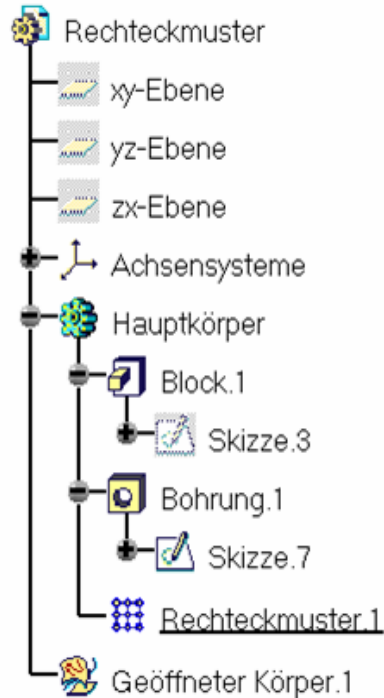
Benutzermuster

Kreismuster

Rechteckmuster

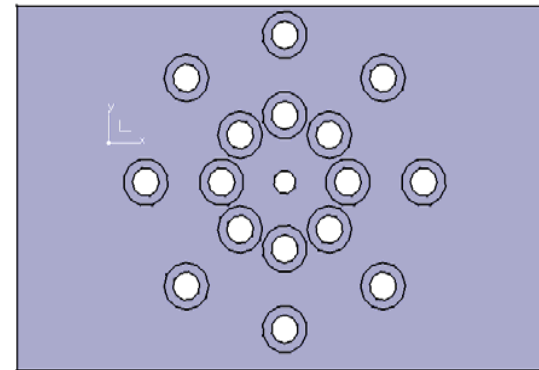
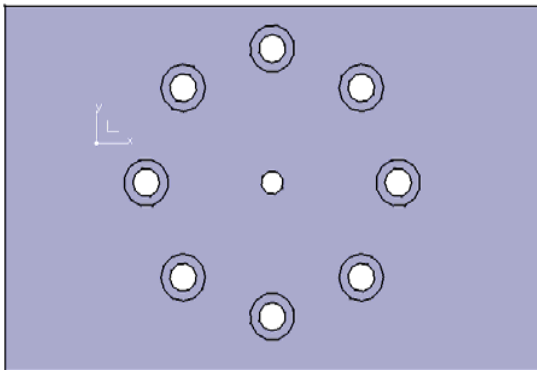
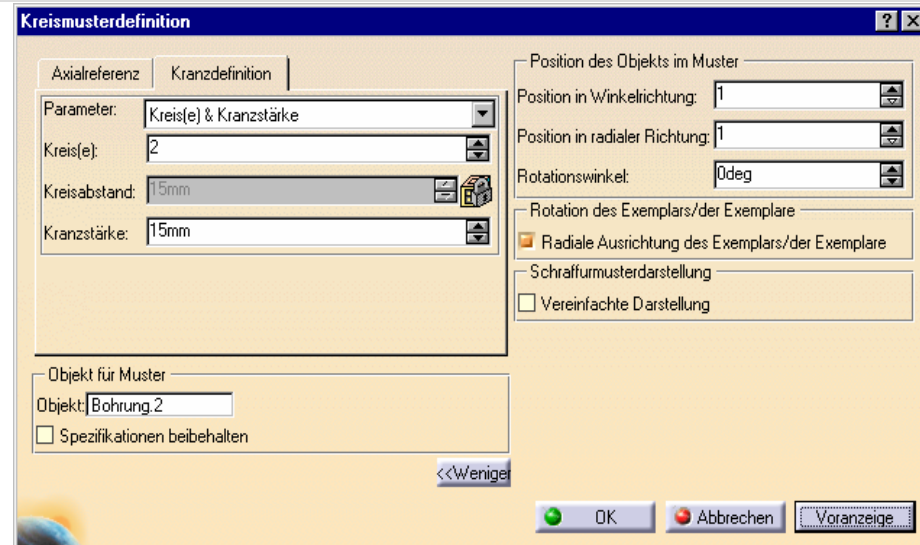
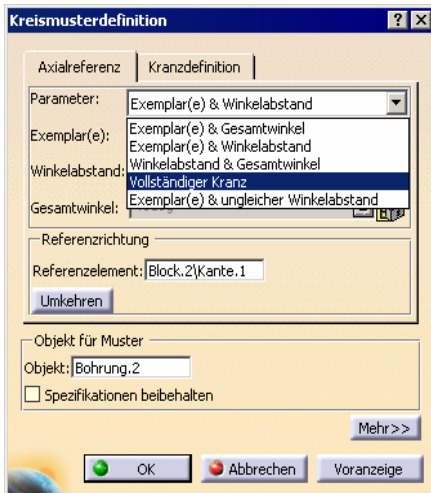
Rechteckmuster

Modul 14



Kreismuster

Modul 14



Benutzermuster

Modul 14

